

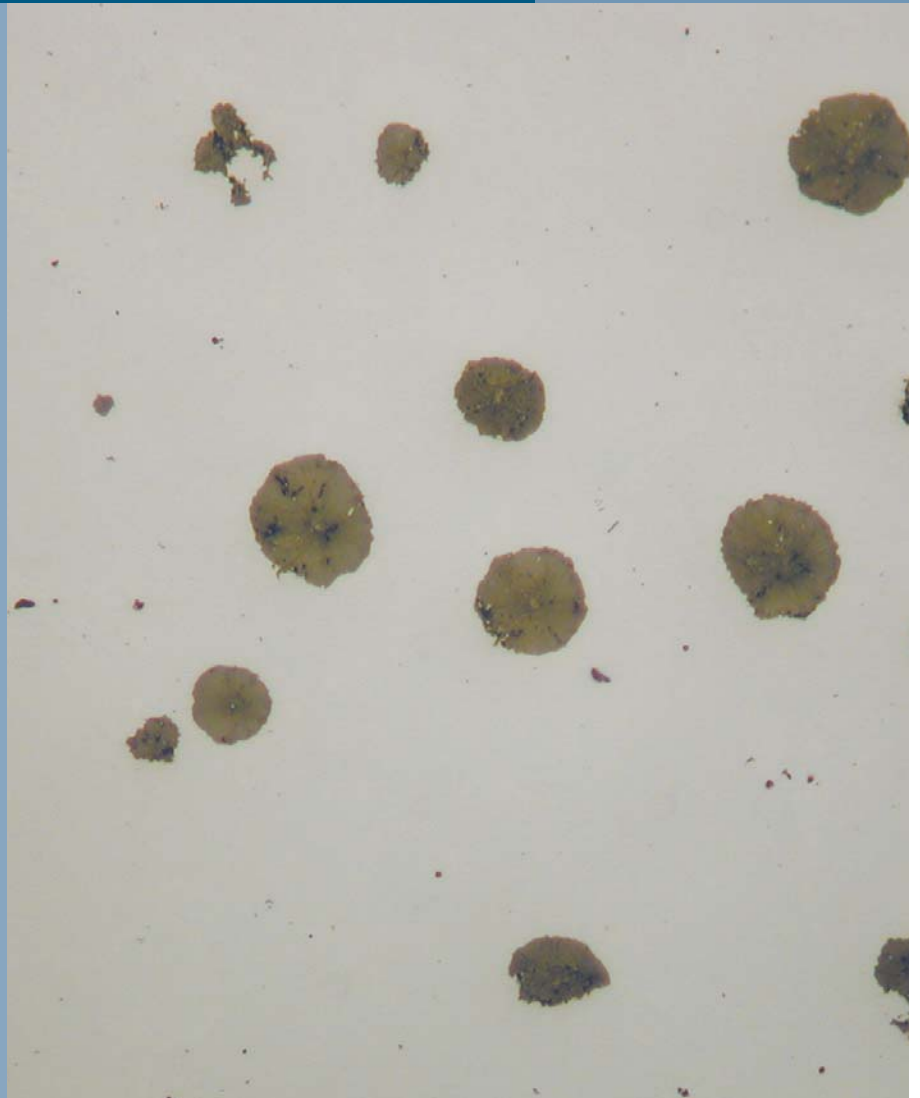
BUEHLER®

OmniMet®

IMAGE ANALYSIS APPLICATIONS SOLUTIONS

86-3400 Graphite Assessment Module

- *Designed for the Accurate Determination of the Graphite Nodularity and Size Classification According to ASTM A247-67 (Reapproved in 1998)*
- *Provides Area Percentage Measurements of Graphite, Pearlite and Ferrite as Well*
- *Automated Measurement Assures Ease-of-Use, Repeatability and Reproducibility*
- *Impressive Report Generated in Microsoft® Excel in Just a Few Mouse Clicks*



BUEHLER


EMERSON
Industrial Automation

The 86-3400 Graphite Assessment Module has been designed for use with either the OmniMet® Express or the OmniMet® Enterprise and provides analysis of graphite in cast iron according to the requirements of ASTM A247-67

An assessment is provided of the nodularity by percent count and the proportion of nodules falling into the eight ASTM A247 classes

In addition, measurements are provided on:

- Graphite flake length
- Area percent ferrite
- Area percent graphite
- Area percent pearlite

Automated Image Analysis and measurement of graphite in cast iron using this OmniMet module can yield a number of benefits including:

- Increased productivity with rapid analysis of specimens
- Improved repeatability
- Less operator strain
- The Microsoft® Excel based ASTM A247 reports may be saved in the OmniMet PC or to a networked drive, e-mailed, or printed

Additional Advantages with the Graphite Assessment Module for the OmniMet® Express and OmniMet® Enterprise:

- All images are calibrated and may be archived in the OmniMet database and retrieved later
- Professional Reports showing images and databased information are easily generated in Microsoft® Word® using the built in Omnimet Report Generator*

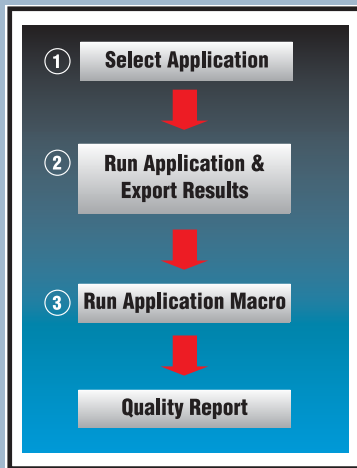
Industry Use:

Ductile and Gray Iron Foundries, Quality Control Labs

Running the 86-3400 Graphite Assessment Module is as simple as 1-2-3!

*The built in Report Generator is available in version 4.0 and later OmniMet® Express and OmniMet® Enterprise

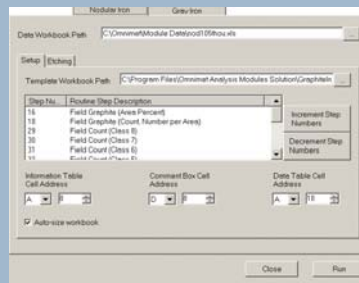
With the OmniMet® Applications Solutions Simplicity is the Essence



Step 1. Select the application from appropriate short cut icon on OmniMet® Express.



Step 2. Push the "Execute Multiple Field" button to run the analysis for as many fields as needed and export the analysis data to Microsoft® Excel.



Step 3. Run the OmniMet application macro to generate the desired report.

Ductile Iron

DUCTILE IRON SUMMARY:	
Sample No.	26
Client Name	26
Customer Number	01010
Site ID#	01010
Field Count	0
Field Count Range	0
Field Area	1216.00 (100)
Field Area Range	1216.00 (100)
Graphite	0.00 (0.00)
Graphite	0.00 (0.00)

Phase Percent	
Matrix	99.00
Ferrite	0.00
Pearlite	0.00
Graphite	0.00

Graphite Classes		
Class	Area	Count
1	0.0%	0
2	0.0%	0
3	0.0%	0
4	0.0%	0
5	0.0%	0
6	0.0%	0
7	0.0%	0
8	0.0%	0

Nodularity	
Mean Length	Percent
0.00	0.00

The OmniMet application macro quickly generates a professional report with graphite nodularity assessment according to ASTM A247, information on flake length and ferrite/pearlite area percent is also provided if appropriate.

Buehler continuously makes product improvements; therefore, technical specifications are subject to change without notice.

© 2005 BUEHLER LTD. Printed in U.S.A. 5M0105 FN01192 Rev. 1
© 2004 Microsoft Corporation. All rights reserved.

*For metallurgical equipment produced by BUEHLER LTD. USA

BUEHLER ANALYST SECTION 12



BUEHLER
BUEHLER LTD. – Worldwide Headquarters
41 Waukegan Road • P.O. Box 1
Lake Bluff, Illinois 60044-1699 USA
Tel: 847/295-6500 • Fax: 847/295-7979
Sales: 1/800/BUEHLER • 1/800/283-4537
Web Site: <http://www.buehler.com>
Email: info@buehler.com

BUEHLER GMBH
In der Steele 2 • 40599 Düsseldorf
Postfach 16 03 55 • 40566 Düsseldorf
Telefon: (+49) 0211/974100 • Telefax: (+49) 0211/9741079
Web Site: <http://www.buehler-met.de>
Email: info@buehler-met.de

BUEHLER SARL
Miniparc de Dardilly, Bât. 0
3, Chemin du Jubin • 69570 Dardilly-France
Téléphone: (+33) (04) 37 59 81 20
Télécopie: (+33) (04) 37 59 81 29
Web Site: <http://www.buehler.fr>
Email: info@buehler.fr

BUEHLER UK
101, Lockhurst Lane • Coventry • CV6 5SF
Telephone: (+44) (0) 24 7658 2158 • Fax: (+44) (0) 24 7658 2159
Web Site: <http://www.buehler.co.uk>
Email: sales@buehler.co.uk

BUEHLER CANADA
9999 Highway 48
Markham, Ontario L3P 3J3
Telephone: (905) 201-4686 • Fax: (905) 201-4683
Sales Telephone: 1-800-268-3593
Email: info@buehler.ca

BUEHLER ASIA
5/F Vogue Centre
696 Castle Peak Road
Lai Chi Kok, Kowloon
Hong Kong, SAR, China
Telephone: (852) 2307 0909
Fax: (852) 2307 0233